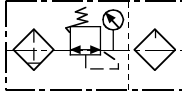
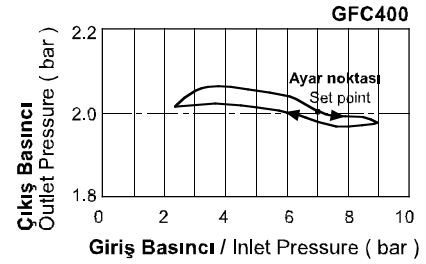
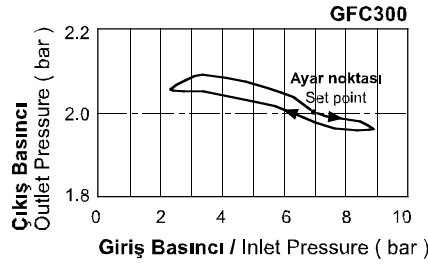
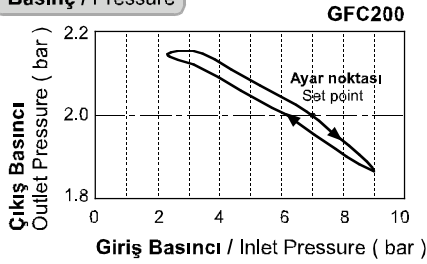
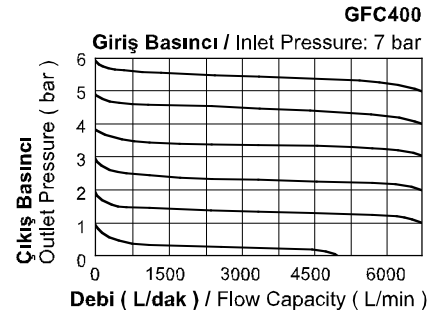
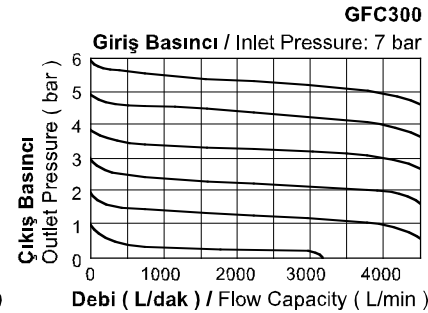
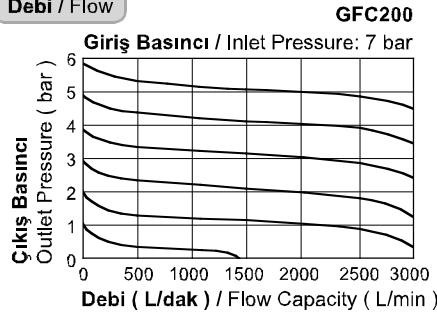


GFC Serisi FR.L Şartlandırıcı / GFC Series FR.L Combination

Özellikler / Specification

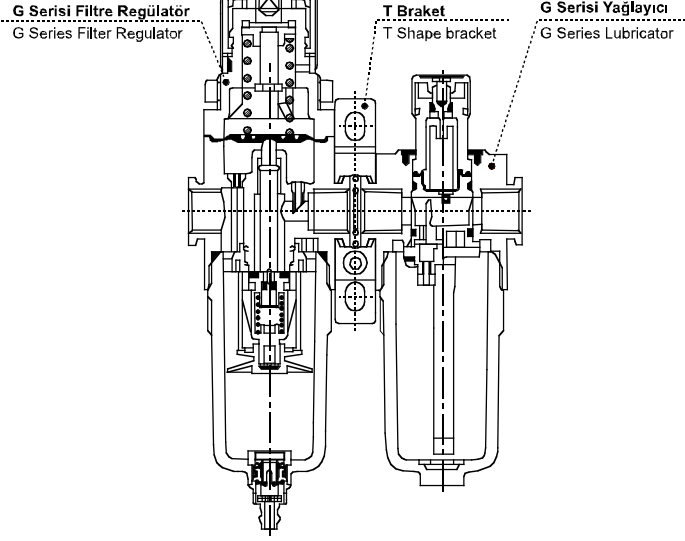
Model / Model	GFC200 -06	GFC200 -08	GFC300 -08	GFC300 -10	GFC300 -15	GFC400 -10	GFC400 -15
Akışkan / Fluid	Hava / Air						
Bağlantı Ölçüsü / Port Size	1/8"	1/4"	1/4"	3/8"	1/2"	3/8"	1/2"
Filtreleme Seviyesi Filtering Grade	40µ veya / or 5µ						
Basınç Aralığı Pressure Range	1.5~9.0bar / 0.15~0.9MPa / 21~128Psi						
Max. Çalışma Basıncı Max. Pressure	10.0bar / 1.0MPa / 142Psi						
Test Basıncı / Proof Pressure	15.0bar / 1.5MPa / 213Psi						
Sıcaklık / Temperature	5~60°C						
Filtre Kavanoz Kapasitesi Drain Bowl Capacity	10cc		40cc			80cc	
Yağ Kavanoz Kapasitesi Oil Bowl Capacity	25cc		75cc			160cc	
Önerilen Yağ Recommended Lubricant	ISOVG32 veya eş değeri / ISO VG32 or equivalent						
Ağırlık / Weight	425g		980g			1950g	

Sembol / Symbol

Basınç ve Akış Diyagramları / Pressure and Flow Chart
Basınç / Pressure

Debi / Flow

Sipariş Kodu / Ordering Code

GFC200	08	M	L	-	F	1	W	G
Model / Model	Bağlantı / Port	Tahliye / Drain	Basınç / Pressure	Manometre / Gauge	Manometre Şekli / Gauge Shape	Skala / Scale	Filtreleme Derecesi / Filtering Grade	Diş Tipi / Thread
GFC200	06: 1/8" 08: 1/4"	Boş / Blank: Yarı Otomatik Semi auto drain	Boş / Blank: Standart Standard	Boş / Blank: Manometreli Pressure Gauge	F: Kare Square	1: MPa	Boş / Blank: 40µ	Boş / Blank: PT
GFC300	08: 1/4" 10: 3/8" 15: 1/2"	M: Elle Tahliye Manuel Drain	L: Düşük Basınç Low Pressure (4 bar)	N: Manometresiz No Pressure Gauge	C: Yuvarlak Round	2: Psi	W: 5µ	G: BSPP
GFC400	10: 3/8" 15: 1/2"	A: Otomatik Auto Drain				3: bar		T: NPT

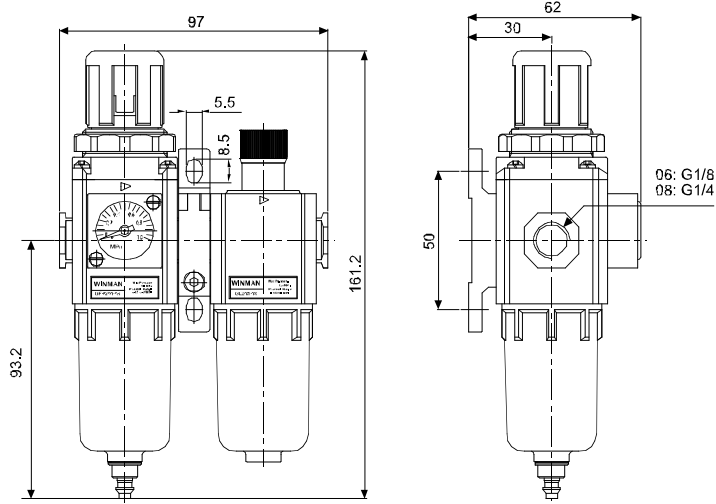
GFC Serisi FR.L Şartlandırıcı / GFC Series FR.L Combination

İç Yapı / Inner Structure

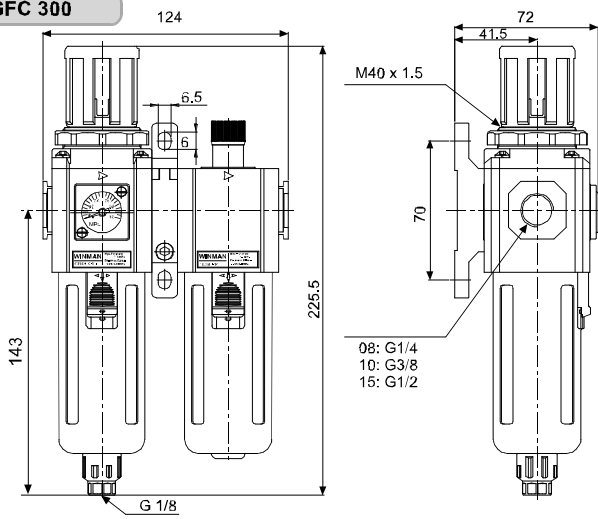


Teknik Çizimler / Technical Drawing

GFC 200



GFC 300



GFC 400

