

EI Kontrollü Valfler 3/2 Konumlu / Ball Valves

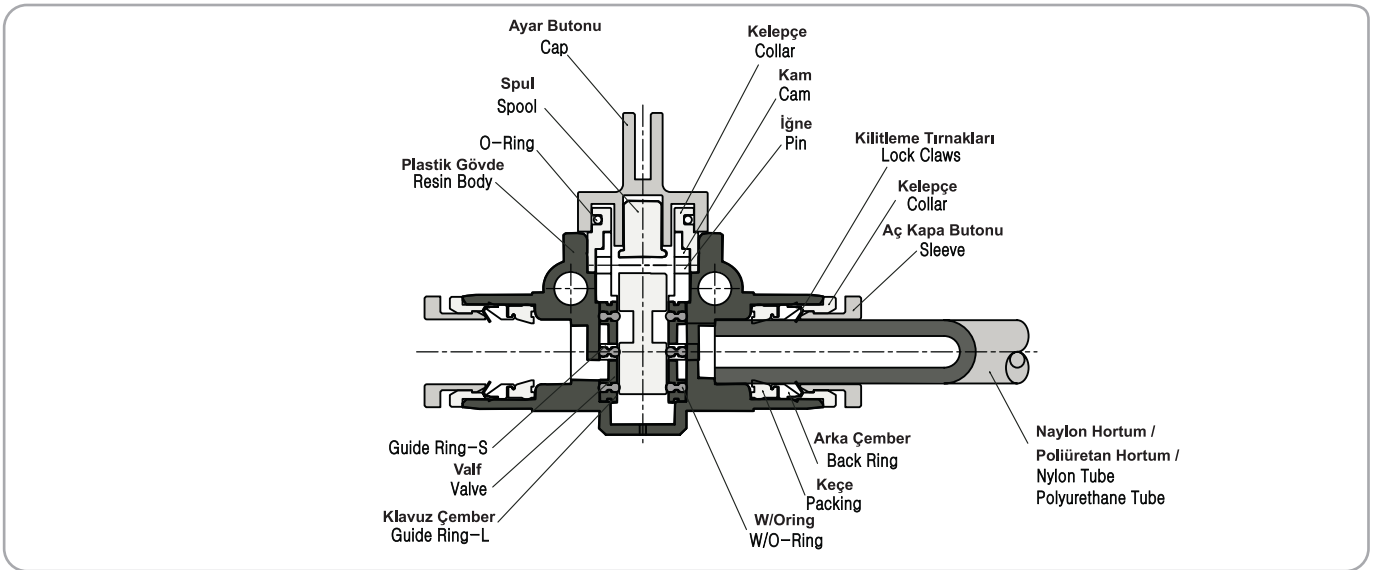
Teknik Özellikler / Technical Specification

Akışkan / Fluid	Hava (Diğer gazlar ve sıvılarda kullanılmaz) / Air (No other gases or liquids)
Çalışma Basıncı / Operating Pressure	0 ~ 9 bar / 0 ~ 0.9 MPa / 0 ~ 150 Psi
Negatif Basıncı (Vakum) / Negative Pressure	- 750 mm Hg / - 99.97 kPa
Sıcaklık / Temperature (C°)	0 ~ 60
Kullanılacak Hortum / Applicable Tube	Poliüretan ve Nylon / Polyurathane and Nylon

Kontrol Yöntemi / Control Method

- Üç yollu kontrol valfi, bağlı olan cihazın onarımı ve montajı için güven sağlamak amacıyla, hava kesildiğinde artan havayı dışarı tahliye eder. / The three-way direction control valve, when the air is stopped, discharges residual pressure to the outlet, which assures safety in repairing or adjusting connected devices.
- İki yollu kontrol valfi artan basıncı tahliye etmez ve artan havayı tahliye etmek gerekmez. Uygun tank ve diğer araçlar için. / The two-way direction control valve does not discharge residual pressure, and suitable for the tank or other device that does not require a discharging residual pressure.
- İki yollu kontrol valfi vakum hortumunu kullanıldığı sistemler için de uygundur. / The two-way direction control valve is also suited for the system where a vacuum pipe is used.

Yapısal Diyagram / Structural Diagram



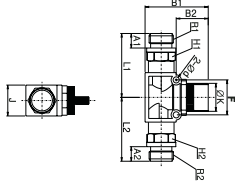
Sipariş Kodu / Ordering Code

HVFS Tip / Type	06 Hortum Çapı (ØD) / Tube Dia	G01 Dış Ölçüsü (T) / Thread Size
EI Kontrollü Valfler Check Valves	06: Ø6	G01: 1/8"
	08: Ø8	G02: 1/4"
	010: Ø10	G03: 3/8"
	012: Ø12	G04: 1/2"

HVSS- Dişli - Dişli Vana / Hand Valve (Thread)



Teknik Çizim / Technical Drawing



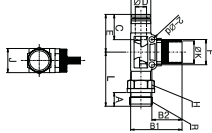
Ölçü Tablosu / Dimension Chart

MODEL	R1	R2	H1	H2	A1	A2	L1	L2	ØK	Ød	B1	B2	F	j	Orifis (mm) Orifice (mm)	Ağırlık (g) Weight (g)	Adet/Kutu Qty / Box
HVSS G01-G01	G1/8	G1/8	14	14	6	6	33.5	33.5	16.4	4.2	40.5	22	18.1	17.5	4.8	39.2	25
HVSS G02-G01	G1/4	G1/8	14	14	8	6	36.5	33.5	16.4	4.2	40.5	22	18.1	17.5	4.8	46.4	25
HVSS G02-G02	G1/4	G1/4	14	14	8	8	36.5	36.5	16.4	4.2	40.5	22	18.1	17.5	4.8	54.2	25
HVSS G03-G02	G3/8	G1/4	17	17	10	8	43.9	40.9	19.2	4.2	40.4	19.2	24.4	21	6.8	83.7	20
HVSS G03-G03	G3/8	G3/8	17	17	10	10	43.9	43.9	19.2	4.2	40.4	19.2	24.4	21	6.8	92.8	20
HVSS G04-G03	G1/2	G3/8	19	19	12	10	45.9	43.9	19.2	4.2	40.4	19.2	24.4	21	6.8	105.7	20
HVSS G04-G04	G1/2	G1/2	19	19	12	12	45.9	45.9	19.2	4.2	40.4	19.2	24.4	21	6.8	118	20

HVFS - Hortum - Dişli Vana / Hand Valve (Tube-Thread)



Teknik Çizim / Technical Drawing



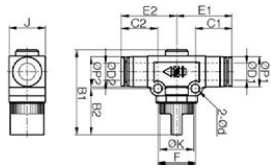
Ölçü Tablosu / Dimension Chart

MODEL	ØD	C	ØP	E	L	R	A	H	ØK	Ød	B1	B2	J	F	Orifis (mm) Orifice (mm)	Ağırlık (g) Weight (g)	Adet/Kutu Qty / Box
HVFS 06-G01	6	17	12.4	25.2	33.5	G1/8	6	14	16.4	4.2	40.5	22	17.5	18.1	4.8	30.8	25
HVFS 06-G02		17	12.4	25.2	36.5	G1/4	8	14	16.4	4.2	40.5	22	17.5	18.1	4.8	37	25
HVFS 06-G03		17	12.4	25.2	39.5	G3/8	10	17	16.4	4.2	40.5	22	17.5	18.1	4.8	45.2	25
HVFS 08-G01	8	18.5	14.4	27.7	33.5	G1/8	6	14	16.4	4.2	40.5	22	17.5	18.1	4.8	31.6	25
HVFS 08-G02		18.5	14.4	27.7	36.5	G1/4	8	14	16.4	4.2	40.5	22	17.5	18.1	4.8	37.7	25
HVFS 08-G03		18.5	14.4	27.7	39.5	G3/8	10	17	16.4	4.2	40.5	22	17.5	18.1	4.8	47.3	25
HVFS 10-G02	10	21	17.6	31.4	40.9	G1/4	8	17	19.2	4.2	40.4	19.2	21	24.4	6.8	58.5	20
HVFS 10-G03		21	17.6	31.4	43.9	G3/8	10	17	19.2	4.2	40.4	19.2	21	24.4	6.8	67.7	20
HVFS 10-G04		21	17.6	31.4	45.9	G1/2	12	19	19.2	4.2	40.4	19.2	21	24.4	6.8	90	20
HVFS 12-G02	12	22.5	21	34.3	40.9	G1/4	8	17	19.2	4.2	40.4	19.2	21	24.4	6.8	60.9	20
HVFS 12-G03		22.5	21	34.3	43.9	G3/8	10	17	19.2	4.2	40.4	19.2	21	24.4	6.8	69.6	20
HVFS 12-G04		22.5	21	34.3	45.9	G1/2	12	19	19.2	4.2	40.4	19.2	21	24.4	6.8	82.2	20

HVFF - Hortum - Hortum Vana / Hand Valve (Tube)



Teknik Çizim / Technical Drawing



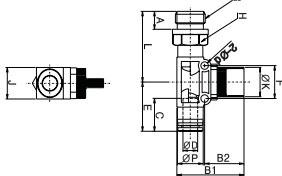
Ölçü Tablosu / Dimension Chart

MODEL	ØD1	ØD2	C1	C2	ØP1	ØP2	E1	E2	ØK	Ød	B1	B2	F	J	Orifis (mm) Orifice (mm)	Ağırlık (g) Weight (g)	Adet/Kutu Qty / Box
HVFF 06-06	6	6	17	17	12.4	12.4	25.2	25.2	16.4	4.2	40.5	22	18.1	17.5	4.8	23.4	25
HVFF 08-06	8	6	18.5	17	14.4	12.4	27.7	25.2	16.4	4.2	40.5	22	18.1	17.5	4.8	24.1	25
HVFF 08-08	8	8	18.5	18.5	14.4	14.4	27.7	27.7	16.4	4.2	40.5	22	20	21	4.8	25	25
HVFF 10-10	10	10	21	21	17.6	17.6	31.4	31.4	19.2	4.2	40.4	19.2	24.4	21	6.8	42.7	20
HVFF 12-10	12	10	22.5	21	21	17.6	34.3	31.4	19.2	4.2	40.4	19.2	24.4	21	6.8	44.9	16
HVFF 12-12			22.5	22.5	21	21	34.3	34.3	19.2	4.2	40.4	19.2	24.4	21	6.8	47	16

HVSF - Dişli-Hortum Vana / Hand Valve (Thread - Tube)



Teknik Çizim / Technical Drawing



Ölçü Tablosu / Dimension Chart

MODEL	ØD	C	ØP	E	L	R	A	H	ØK	Ød	B1	B2	J	F	Orifis (mm) Orifice (mm)	Ağırlık (g) Weight (g)	Adet/Kutu Qty / Box
HVSF 06-G01	6	17	12.4	25.2	33.5	G1/8	6	14	16.4	4.2	40.5	22	17.5	18.1	4.8	31.9	25
HVSF 06-G02		17	12.4	25.2	36.5	G1/4	8	14	16.4	4.2	40.5	22	17.5	18.1	4.8	38.9	25
HVSF 06-G03		17	12.4	25.2	39.5	G3/8	10	17	16.4	4.2	40.5	22	17.5	18.1	4.8	46.4	25
HVSF 08-G01	8	18.5	14.4	27.7	33.5	G1/8	6	14	16.4	4.2	40.5	22	17.5	18.1	4.8	32.8	25
HVSF 08-G02		18.5	14.4	27.7	36.5	G1/4	8	14	16.4	4.2	40.5	22	17.5	18.1	4.8	39.8	25
HVSF 08-G03		18.5	14.4	27.7	39.5	G3/8	10	17	16.4	4.2	40.5	22	17.5	18.1	4.8	45.2	25
HVSF 10-G02	10	21	17.6	31.4	40.9	G1/4	8	17	19.2	4.2	40.4	19.2	21	24.4	6.8	59.8	20
HVSF 10-G03		21	17.6	31.4	43.9	G3/8	10	17	19.2	4.2	40.4	19.2	21	24.4	6.8	65.3	20
HVSF 10-G04		21	17.6	31.4	45.9	G1/2	12	19	19.2	4.2	40.4	19.2	21	24.4	6.8	80	20
HVSF 12-G02	12	22.5	21	34.3	40.9	G1/4	8	17	19.2	4.2	40.4	19.2	21	24.4	6.8	62.8	20
HVSF 12-G03		22.5	21	34.3	43.9	G3/8	10	17	19.2	4.2	40.4	19.2	21	24.4	6.8	69.3	20
HVSF 12-G04		22.5	21	34.3	45.9	G1/2	12	19	19.2	4.2	40.4	19.2	21	24.4	6.8	81.9	20