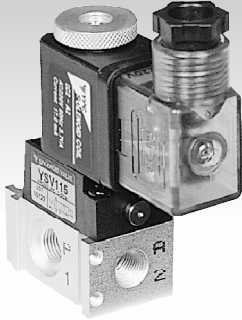


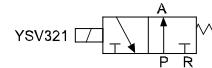
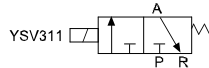
## YSV 300 Serisi / YSV 300 Series



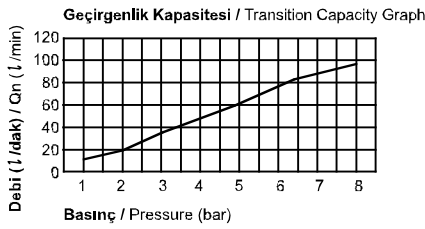
## Özellikler / Specification

Model / Model	YSV311	YSV321
Akışkan / Fluid	40µm Filtrelenmiş Hava / Air (to be by 40µm Filter Element)	
Çalışma Basıncı / Operating Pressure	0 ~ 10.0 bar	
Orifis Çapı / Orifice Size	P = Ø 1.5, R = Ø 1.5	P = Ø 1.5, R = Ø 1.5
Sıcaklık / Temperature (C°)	5 ~ 60 °C / 41 ~ 140 °F	
Min. Aktifleşme Zamanı(sn) / Min. Activating Time(sec)	20 ms yada daha az / 20 ms or less	
Max. Çalışma Frekansı / Max. Frequency	8 çevrim/sn / 8 cycle/sec	
Yağlama / Lubrication	Gerektirmez / Not Required ( ISO VG32# )	
Yalıtım / Insulation	F Sınıfı / F Class	
Voltaj Aralığı / Voltage Range	±10% Voltaj Oranında / ± 10% of Rated Voltage	
Güç Tüketimi / Power Consumption	AC:5.5VA (60Hz) / DC: 2.5W	

## Sembol / Symbol



## Akış Diyagramı / Flow Chart

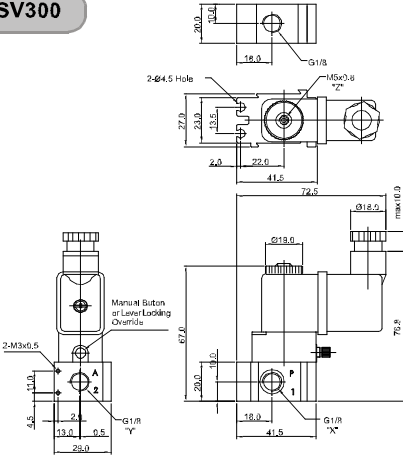


## Parçaların Malzemeleri / Material of Parts

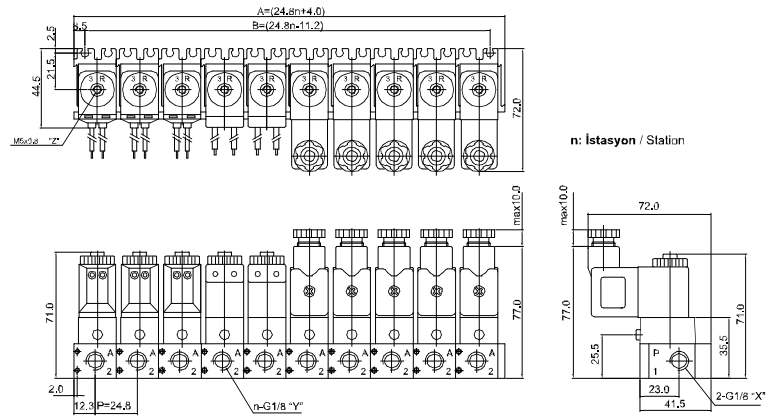
Parça / İtem	Malzeme / Material
Valf Gövdesi / Valve Body	Alüminyum / Aluminium
Pilot Parçaları / Pilot Parts	Cam Takviyeli Naylon / Glass Filled Nylon
Pilot Plaka / Pilot Plate	Basınçlı Çinko Kokil Döküm / Zinc Pressure Die-Cast
Yay / Spring	Paslanmaz / Stainless
Keçeler / Seals	NBR
Armatür / Armature	Paslanmaz Çelik / Stainless Steel
Armatür Keçeleri / Armature Seals	Viton / Viton

## Teknik Çizimler / Technical Drawings

## YSV300



## YMF300



## Sipariş Kodu / Ordering Code

YSV3	1	1	D	P	SC1	CN1	A2
Valf Serisi Valve Series	Fonksiyon Function	Bağlantı Ölç. & Diş Tipi Port Size & Thread	Pilot Kaynağı Pilot Source	Manuel Çalıştırma Manual Operator	Selenoid Bobin Tipi Solenoid Coil Type	Soket Tipi Connector Type	Voltaj Voltage
YSV3: Selenoid Valf YSV3: Solenoid Valve	1: 3/2 Normalde Kapalı Yay Dönüşümlü 2: 3/2 Normally Closed Spring Return	1: G 1/8	D: Direkt Kontrollü D: Direct Operated	P: Yaylı Kilitsiz P: Push Non-Locking	0: Yok 0: None	0: Yok 0: None	0: Yok 0: None
					SC2: 3'lü Bağlantı SC2: 3 Pin Connector Coil	CN2: Normal Soket CN2: Normal Connector	A2: AC 220V
	2: 3/2 Normalde Açık Yay Dönüşümlü 2: 3/2 Normally Open Spring Return	2: NPT 1/8		L: Yaylı Kilitli L: Lever Locking	SG2: Kauçuk Rondelalı SG2: Grommet / Flying Leads	CD2: Soket LED'li CD2: Connector With LED	A4: AC 24V
				SD2: Kauçuk Rondelalı ve LED'li SD2: Grommet / Flying Leads With LED	CZ2: Soket LED'li ve Şok Emicili CZ2: Connector With LED & Surge Suppressor	D4: DC 24V D2: DC 12V	