

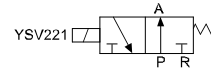
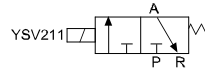
## YSV 200 Serisi / YSV 200 Series



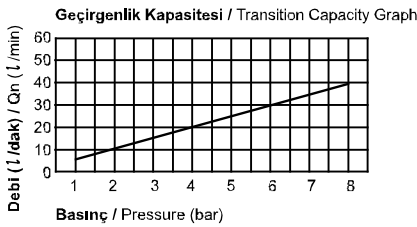
## Özellikler / Specification

Model / Model	YSV211	YSV221
Akışkan / Fluid	40µm Filtrelenmiş Hava / Air (to be by 40µm Filter Element)	
Çalışma Basıncı / Operating Pressure	0 ~ 10.0 bar	
Orifis Çapı / Orifice Size (mm)	P = Ø 1.1, R = Ø 1.2	P = Ø 1.2, R = Ø 1.1
Sıcaklık / Temperature (°C)	5 ~ 60 °C / 41 ~ 140 °F	
Min. Aktifleşme Zamanı (sn) / Min. Activating Time (sec)	20 ms yada daha az / 20 ms or less	
Max. Çalışma Frekansı / Max. Frequency	8 çevrim/sn / 8 cycle/sec	
Yağlama / Lubrication	Gerektirmez / Not Required (ISO VG32#)	
Yalıtım / Insulation	F Sınıfı / F Class	
Voltaj Aralığı / Voltage Range	±10% Voltaj Oranında / ± 10% of Rated Voltage	
Güç Tüketimi / Power Consumption	AC: 3.5VA (60Hz) / DC: 2.5W	

## Sembol / Symbol



## Akış Diyagramı / Flow Chart

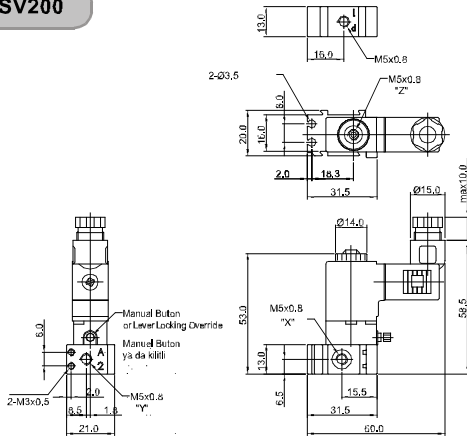


## Parçaların Malzemeleri / Material of Parts

Parça / Item	Malzeme / Material
Pilot Parçaları / Pilot Parts	Cam Takviyeli Naylon / Glass Filled Nylon
Yay / Spring	Paslanmaz / Stainless
Keçeler / Seals	NBR
Armatür / Armature	Paslanmaz Çelik / Stainless Steel
Belirteç / Indicator	Polikarbonat / Polycarbonate
Armatür / Armature	Paslanmaz Çelik / Stainless Steel
Keçeler / Seals	NBR

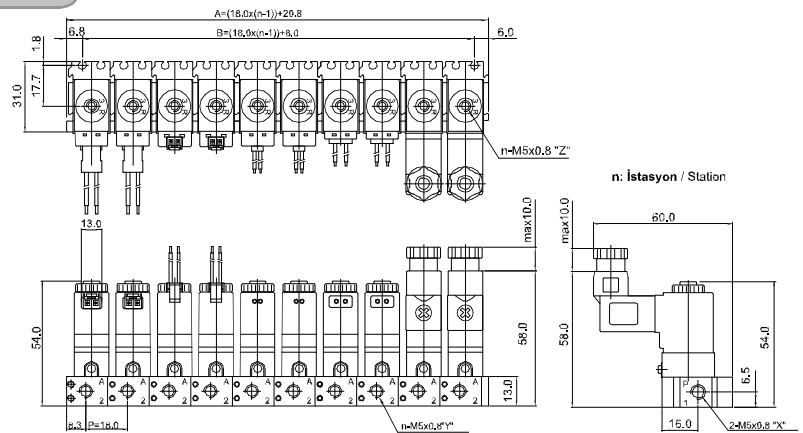
## Teknik Çizimler / Technical Drawings

## YSV200



Giriş / Tip Port / Type	N.C	N.O
X	P(1)	R(3)
Y	A(2)	A(2)
Z	R(3)	P(1)

## YMF200



## A, B: Ölçüleri / A, B: Dimensions

Parça / İstasyon Item / Station	2	3	4	5	6	7	8	9	10
A	38.8	56.8	74.8	92.8	110.8	128.8	146.8	164.8	182.8
B	26.0	44.0	62.0	80.0	98.0	116.0	134.0	170.0	170.0

## Sipariş Kodu / Ordering Code

YSV2	1	1	D	P	SC1	CN1	A2
Valf Serisi / Valve Series	Fonksiyon / Function	Bağlantı Ölç. & Diş Tipi / Port Size & Thread	Pilot Kaynağı / Pilot Source	Manuel Çalıştırma / Manual Operator	Selenoid Bobin Tipi / Solenoid Coil Type	Soket Tipi / Connector Type	Voltaj / Voltage
YSV2: Selenoid Valf YSV2: Solenoid Valve	1: 3/2 Normalde Kapalı Yay Dönüşümü 2: 3/2 Normally Closed Spring Return	1: M5-0.8	D: Direkt Kontrollü D: Direct Operated	P: Yaylı Kilitsiz P: Push Non-Locking	0: Yok 0: None	0: Yok 0: None	0: Yok 0: None
					SC1: 3'lü Bağlantı SC1: 3 Pin Connector Coil		CN1: Normal Soket CN1: Normal Connector
	2: 3/2 Normalde Açık Yay Dönüşümü 2: 3/2 Normally Open Spring Return	2: 10-32 UNF		L: Yaylı Kilitli L: Lever Locking	SG1: Kauçuk Rondelali SG1: Grommet / Flying Leads	CD1: Soket LED'li CD1: Connector With LED	A4: AC 24V
				SD1: Kauçuk Rondelali ve LED'li SD1: Grommet / Flying Leads With LED	SL1: 90 Derece Fişli Kablo LED'li SL1: 90 Degree Plug-in Wire Assembly LED	CZ1: Soket LED'li ve Şok Emicili CZ1: Connector With LED & Surge Suppressor	D4: DC 24V
				SM1: 180 Derece Fişli Kablo LED'li SM1: 180 Degree Plug-in Wire Assembly LED			D2: DC 12V