

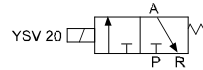
YSV 20 Serisi / YSV 20 Series



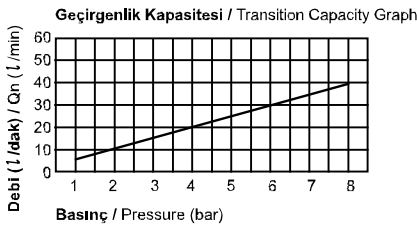
Özellikler / Specification

Model / Model	YSV20
Akışkan / Fluid	40µm Filtrelenmiş Hava / Air (to be by 40µm Filter Element)
Çalışma Basıncı / Operating Pressure	0 ~ 8,0 bar
Orifis Çapı / Orifice Size (mm)	P = Ø 1.1, R = Ø 1.5
Sıcaklık / Temperature (C°)	5 ~ 60 °C / 41 ~ 140 °F
Min. Aktifleşme Zamanı (sn) / Min. Activating Time (sec)	20 ms yada daha az / 20 ms or less
Max. Çalışma Frekansı / Max. Frequency	10 çevrim/sn / 10 cycle/sec
Yağlama / Lubrication	Gerektirmez / Not Required
Yalıtım / Insulation	F Sınıfı / F Class
Voltaj Aralığı / Voltage Range	±10% Voltaj Oranında / ± 10% of Rated Voltage
Güç Tüketimi / Power Consumption	AC:3.5VA (60Hz) / DC:2.5W

Sembol / Symbol



Akış Diyagramı / Flow Chart

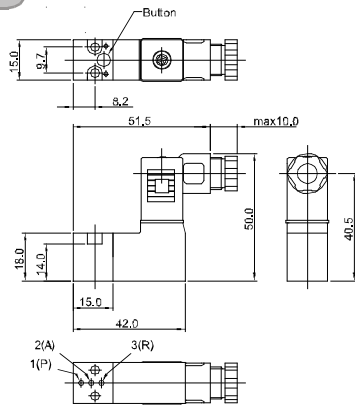


Parçaların Malzemeleri / Material of Parts

Parça / Item	Malzeme / Material
Pilot Parçaları / Pilot Parts	Cam Takviyeli Naylon / Glass Filled Nylon
Yay / Spring	Paslanmaz / Stainless
Keçeler / Seals	NBR
Armatür / Armature	Paslanmaz Çelik / Stainless Steel
Belirteç / Indicator Cap	Polikarbonat / Polycarbonate
Kablo / Lead Wire	AWG-no.24
Kablo Kumandası / Lead Wire Packing	Viton / Viton

Teknik Çizimler / Technical Drawings

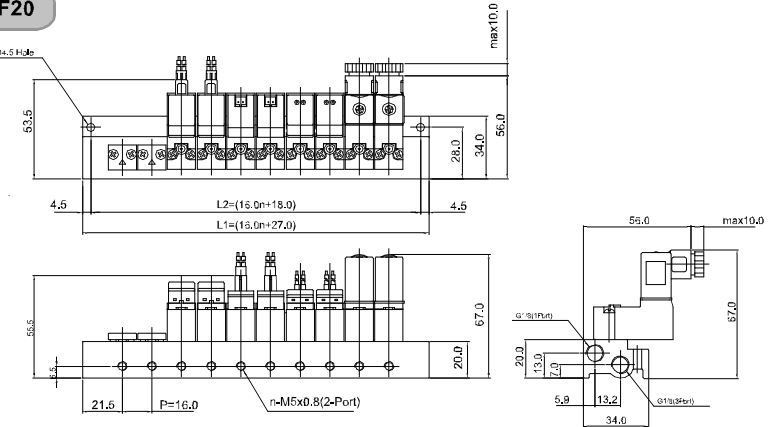
YSV20



Klipsli Fiş Soket / Plug Connector With Clip

PG2 - 06	L : 600 mm
PG2 - 10	L : 1000 mm

YMF20



Körleme Plakası / Blanking Plate

YMF 20 - BLK

Manifold Bloğu / Manifold Block

YMF 20	2
Sembol / Symbol	İstasyon / Station
YMF 20 (3 yol / way)	02, 04, 06, 08, 10, 12, 14

Sipariş Kodu / Ordering Code

YSV2	0	D	P	SC	CN1	A2
Valf Serisi Valve Series	Fonksiyon Function	Pilot Kaynağı Pilot Source	Manuel Çalıştırma Manuel Operator	Selenoid Bobin Tipi Solenoid Coil Type	Soket Tipi Connector Type	Voltaj Voltage
YSV2: Selenoid Valf YSV2: Solenoid Valve	0: 3/2 Normalde Kapalı Yay Dönüşümü 0: 3/2 Normally Closed Spring Return	D: Direkt Kontrollü D: Direct Operated	P: Yaylı Kilitsiz P: Push Non-Locking	0: Yok 0: None	0: Yok 0: None	0: Yok 0: None
				SC: 3'lü Bağlantı SC: 3 Pin Connector Coil		
				SG: Kauçuk Rondelalı SG: Grommet / Flying Leads	CN1: Normal Soket CN1: Normal Connector	A2: AC 220V
				SD: Kauçuk Rondelalı ve LED'li SD: Grommet / Flying Leads With LED		
				SL: 90 Derece Fişli Kablo LED'li SL: 90 Degree Plug-in Wire Assembly LED	CD1: Soket LED'li CD1: Connector With LED	A1: AC 110V
				SM: 180 Derece Fişli Kablo LED'li SM: 180 Degree Plug-in Wire Assembly LED		
					CZ1: Soket LED'li ve Şok Emicili CZ1: Connector With LED & Surge Suppressor	D4: DC 24V D2: DC 12V