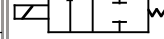


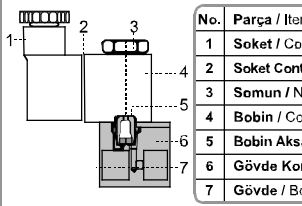
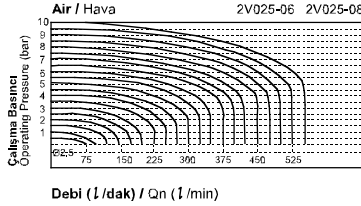
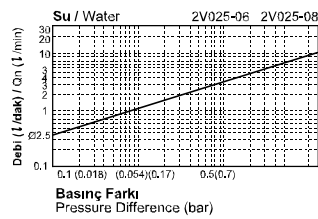
2V Serisi Solenoid Valfler / 2V Series Solenoid Valves

Sipariş Kodu / Ordering Code
Sembol / Symbol

| 2V | 025 | 06 | AC110V |
|---|----------------------------|------------------------------|-------------------|
| Model Model | Orifis Çapı Orifis Size | Bağlantı Ölçüsü Port Size | Voltaj Voltage |
| 2V: 2 Yol 2 Konumlu Solenoid Valf 2 Port 2 Position Solenoid Valve | 025: 2.5 mm | 06: 1/8" | DC12V |
| | | | DC24V |
| | | 08: 1/4" | AC110V 50 Hz |
| | | | AC220V 50 Hz |

2V025 - 06/08

Özellikler / Specification

| Model / Model | 2V025-06 | 2V025-08 |
|--|---|----------|
| Akışkan / Fluid | Hava, Su, Yağ / Air, Water, Oil | |
| Kumanda / Acting | Direkt Kumanda / Direct Acting | |
| Tip / Type | Normalde Kapalı / Normally Closed | |
| Orifis Çapı / Orifice Size (mm) | 2.5 | |
| Cv Değeri / Cv Value | 0.23 | |
| Bağlantı Ölçüsü / Port Size | 1/8" | 1/4" |
| Viskoz Sınırı / Viscosity Limit | 20 cSt Altında / Under 20 cSt | |
| Çalışma Basıncı / Operating Pressure | 0 ~ 10 bar / 0 ~ 1.0 MPa / 0 ~ 142 Psi | |
| Test Basıncı / Proof Pressure | 15.0 bar / 1.5 MPa / 213 Psi | |
| Sıcaklık / Temperature (C°) | - 10 ~ 80 | |
| Voltaj Aralığı / Voltage Range | AC: -20% ~ +10% DC: -15% ~ +10% | |
| Koruma / Protect | IP65 | |
| Güç Tüketimi / Power Consumption | AC220V: 4.5VA DC24V: 5.0W | |
| Yalıtım / Insulation | F Sınıfı / F Class | |
| Gövde Malzemesi / Material of Body | Çinko Kaplı Pirinç / Brass with Zinc Plated | |
| Conta Malzemeleri / Seal Material | Viton | |
| Min. Aktifleşme Zamanı (sn) / Min. Activating Time (sec) | 0.05 | |

Akış Diyagramları / Flow Charts
İç Yapı / Inner Structure


| No. | Parça / Item |
|-----|----------------------------------|
| 1 | Soket / Connector |
| 2 | Soket Contası / Connector Gasket |
| 3 | Somun / Nut |
| 4 | Bobin / Coil |
| 5 | Bobin Aksamı / Armature Assembly |
| 6 | Gövde Koruma / Body Cover |
| 7 | Gövde / Body |

Önemli Parçaların Malzemeleri / Material of Major Parts

| Parça / Item | 2V025 | 2V130 | 2V250 | Parça / Item | 2V025 | 2V130 | 2V250 |
|----------------------------------|-------|----------------|-------|----------------------------------|---|-------|-------|
| Gövde / Body | | Pirinç / Brass | | Bobin Aksamı / Armature Assembly | Saf Bakır Boru / Pure Iron with Copper Tube | | |
| Gövde Koruması / Body Cover | | Pirinç / Brass | | Diyafram / Diaphragm | NBR | | |
| Soket / Connector | | PM | | Somun / Nut | Nikel Kaplı Bakır / Copper with Nickel Plated | | |
| Soket Contası / Connector Gasket | | NBR | | Bobin / Coil | Plastik Kaplanmış Bakır Tel / Copper with Resin Covered | | |

Teknik Çizimler / Technical Drawings
